



**2022 Fall Conference  
General Session, October 11<sup>th</sup>  
High-Impact Opportunities -  
Innovative Projects Changing Oregon's Eco-Landscape**

# **“Build Back Better With Mass Timber”**

## **Presenters**

**Donna Greene-Salter, Business Oregon**

**Marcus Kauffman, Oregon Dept. of Forestry**



**Oregon  
Mass Timber  
Coalition**

# Who we are...

**The Oregon Mass Timber Coalition is a partnership between Oregon's leading research universities and government entities.**

**Our purpose is to enhance and expand Oregon's established wood products ecosystem by growing its mass timber sector into a significant regional cluster in the U.S.**



**Oregon  
Mass Timber  
Coalition**

# Oregon Mass Timber Coalition / Anchor Institutions



*And growing...*



Oregon  
Mass Timber  
Coalition

# Coalition Background

- **Crisis - 2020 Labor Day wildfires prompted DLCDC and other state agencies to discuss replacement housing, forest restoration, fire salvage, and equitable economic development. Emphasis grew on the potential use of mass timber as a housing construction solution.**
- **Experienced Partners – Several stakeholders were already partnered through an EDA program that designated Oregon as a manufacturing community focused on mass timber. The Pacific Northwest Manufacturing Partnership (PNMP) provided a foundational model for the future Oregon Mass Timber Coalition.**



**Oregon  
Mass Timber  
Coalition**

# What made EDA's Build Back Better Regional Challenge **unique?** (Besides a wad of money?)

## The program model:

- **Separate planning grant**
- **High impact when multiple awards are bundled**
- **Assures projects are related but stand on their own merit**
- **Helps avoid duplicative efforts**
- **Encourages coordinated planning, management & measures across multiple jurisdictions**
- **Motivates industry when multiple barriers to business investment are addressed**



**Oregon  
Mass Timber  
Coalition**

# Best practices when creating an industry coalition:

- **Commit time and money and/or services as shared resources**
- **Meet regularly and be clear on what you can deliver.**
- **Align on what you can agree upon - Define your vision, your purpose and your shared values**
- **Governance – Codify your operational rules in a MOU or By-Laws so decision-making, leadership and other roles and responsibilities are clear**
- **Budget -Identify a neutral fiscal agent and keep joint Coalition activities separate from project activities**

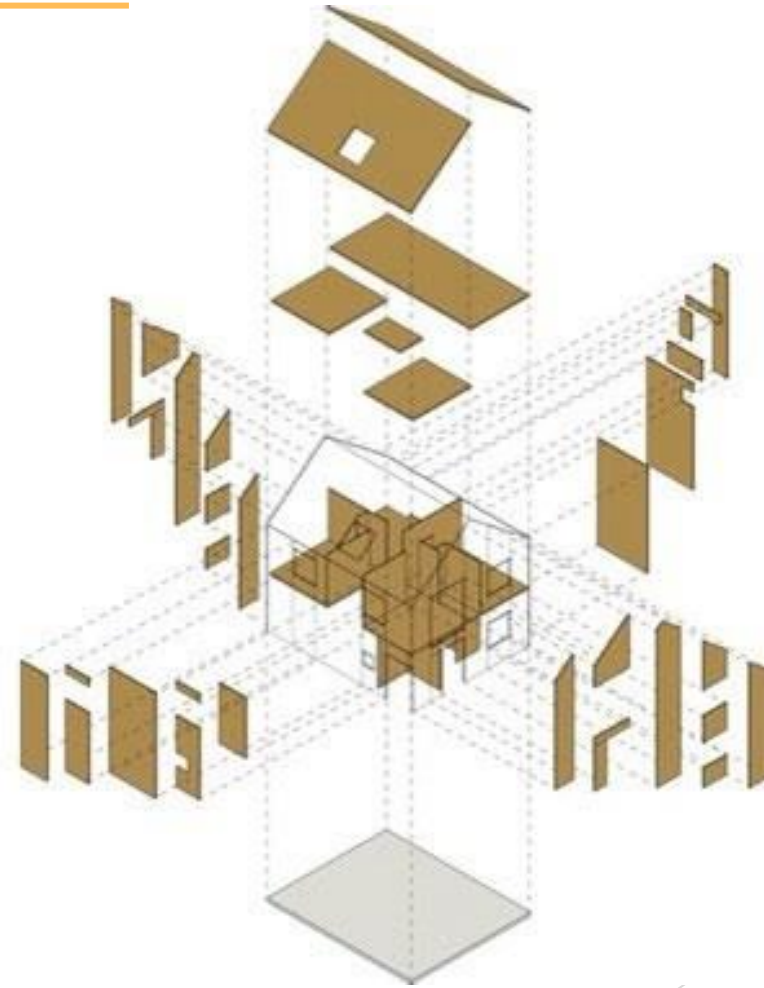


Oregon  
Mass Timber  
Coalition

# Project Focus Areas

---

- T2: Building Innovation Hub
- Workforce Development
- Research and Prototyping
- Forest Restoration
- Supply Chain
- Model Development Codes



Oregon  
Mass Timber  
Coalition



# AFFORDABLE HOUSING

Addressing Oregon's statewide housing shortage

Oregon's housing crisis is impacting both urban and rural communities.

Prefabricated mass timber panelized and modular housing can create new opportunities for home ownership for working families.



Oregon  
Mass Timber  
Coalition



# INVESTMENTS IN MANUFACTURING

## Port of Portland: A Mass Timber Accelerator

The Port will transform Marine Terminal 2 into a new mass timber manufacturing campus that will start by building modular homes.



Oregon  
Mass Timber  
Coalition

# EXPANDED INDUSTRY CLUSTER

- ▶ Jumpstart new modular housing manufacturing sub-sector that uses mass timber products
- ▶ Connect restoration fiber to mass timber manufacturing
- ▶ Support job creation along the supply chain in harvesting, manufacturing and construction



Oregon  
Mass Timber  
Coalition



# A RESTORATION SUPPLY CHAIN

Oregon currently experiencing fiber shortages, more expected in the future

Federal forests need more active management

Forest restoration needed as a fiber source

Track and trace program to build transparency and accountability in public forest management.

Providing wood fiber to the state's growing mass timber industry.



Oregon  
Mass Timber  
Coalition



# OSU SMART FORESTRY

- ▶ Map wood fiber available to identify available wood sources
- ▶ Identifying new uses for low-value species from drier forests
- ▶ Conduct techno/economic analysis of eastside processing options
- ▶ Research advanced harvesting techniques to lower costs and improve safety
- ▶ Expand workforce development

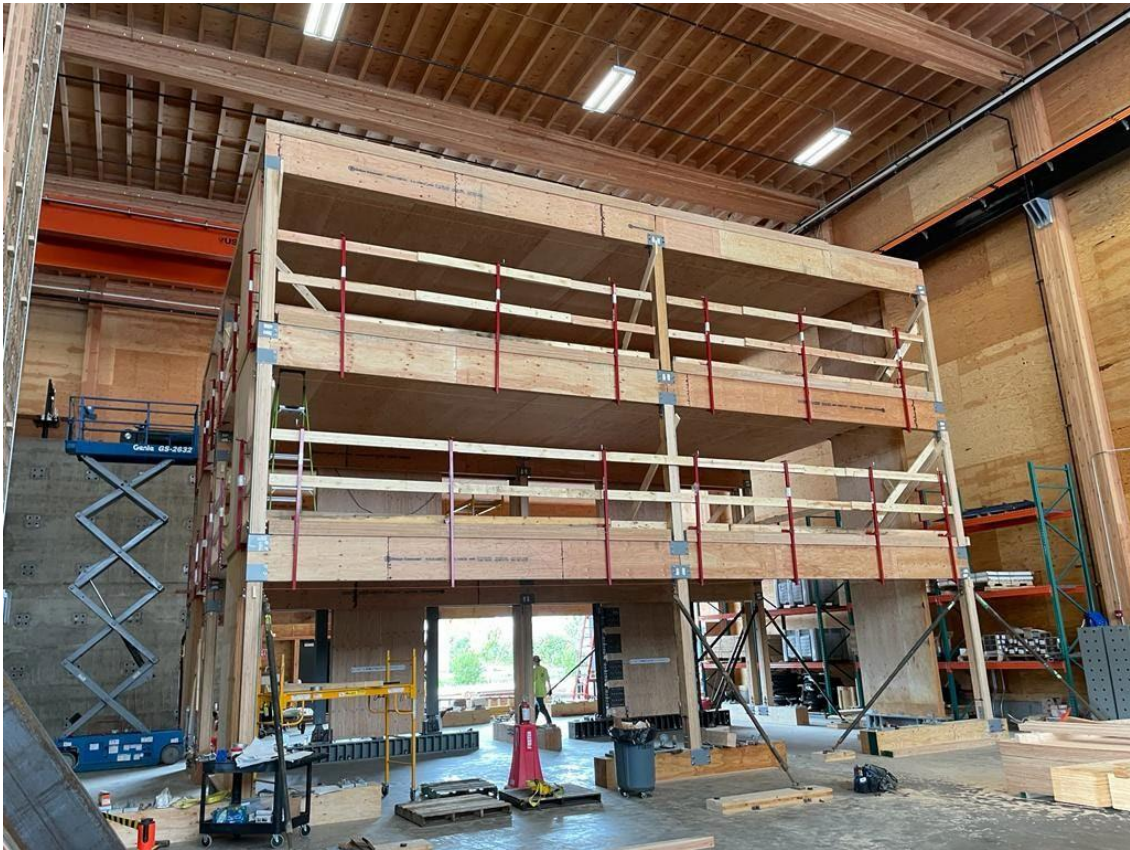


Oregon  
Mass Timber  
Coalition



# RESEARCH & DEVELOPMENT

Design and test structural, fire and seismic performance, durability and acoustic properties of mass timber building assemblies at existing and new TDI labs.



Oregon  
Mass Timber  
Coalition



# ADDRESSING CODE CHALLENGES

Model language for local zoning and state development codes to make it easier to build using mass timber modular panels.

- DLCD to partner with local communities.



Oregon  
Mass Timber  
Coalition

# WORKFORCE DEVELOPMENT

Investments in rural and urban workforce development and providing job training & career pathways.

Partnership-led workforce development investments in training programs for manufacturing and construction



Oregon  
Mass Timber  
Coalition



**2022 Fall Conference  
General Session, October 11<sup>th</sup>  
High-Impact Opportunities -  
Innovative Projects Changing Oregon's Eco-Landscape**

**Thank you.**

**[donna.greene@biz.oregon.gov](mailto:donna.greene@biz.oregon.gov)  
[marcus.kauffman@odf.oregon.gov](mailto:marcus.kauffman@odf.oregon.gov)**



**Oregon  
Mass Timber  
Coalition**