

The Oregon EcDev Toolbox

oeda
OREGON ECONOMIC DEVELOPMENT ASSOCIATION

How to get \$H!t done

oeda

OREGON ECONOMIC DEVELOPMENT ASSOCIATION

The Oregon EcDev Toolbox

oeda
OREGON ECONOMIC DEVELOPMENT ASSOCIATION



Colleen Padilla
Exec Director; SOREDi
colleen@soredi.org
541.773.8946



Thomas Schnell
Business Finance Officer; BizOR
thomas.schnell@biz.oregon.gov
541-280-1631



Chris Cummings
Dept Director; BizOR
chris.cummings@biz.Oregon.gov50
3.986.0123



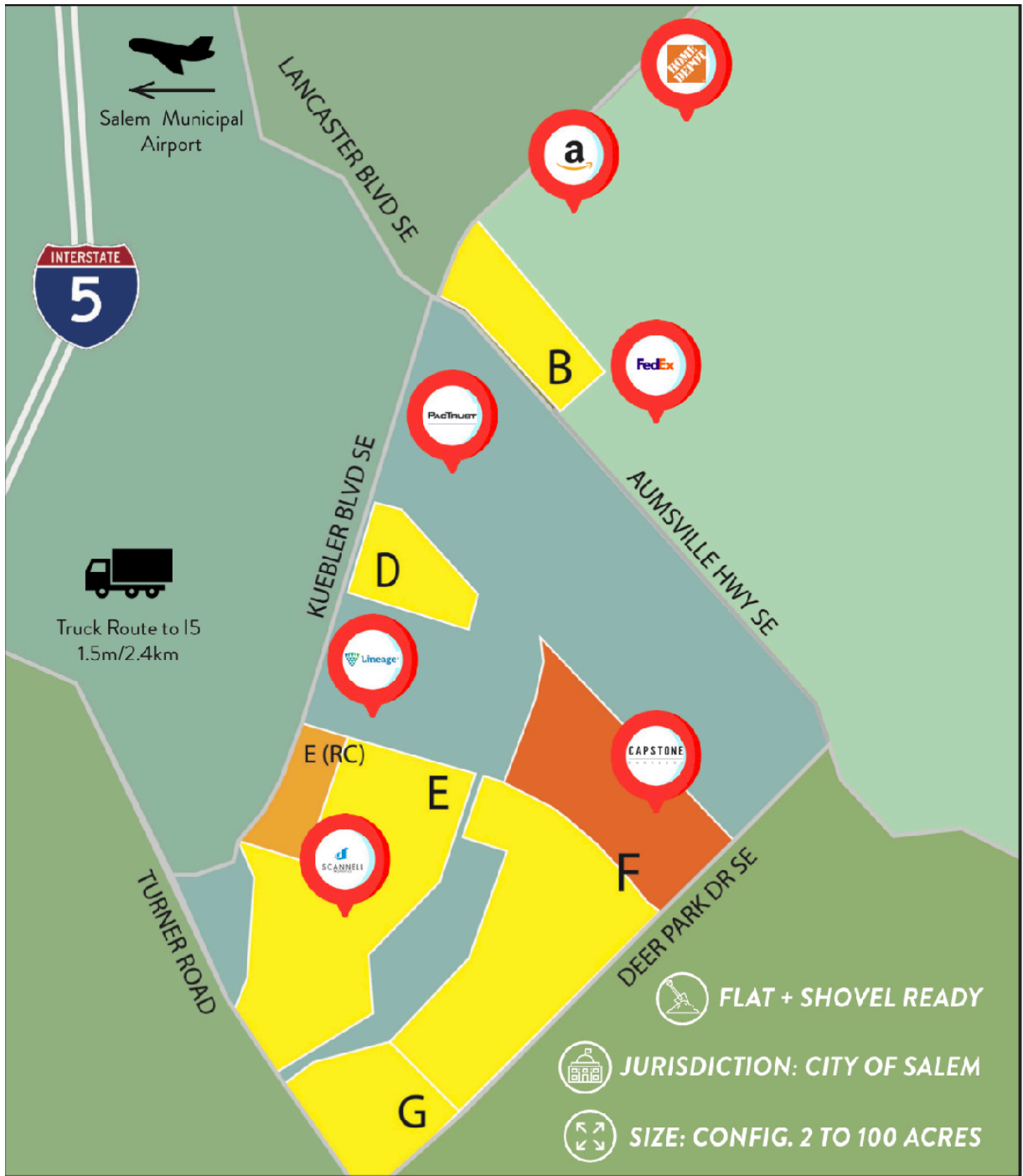
Tory Banford
Project Manager; City of Salem
tbanford@cityofsalem.net
503.540.2445



Seth Sherry
EcDev Manager; City of Albany
Seth.sherry@cityofalbany.net
541.231.4870

Business Oregon Business Finance Overview

- Direct Loans
 - Entrepreneurial Development Loan Fund (EDLF)
 - Oregon Business Development Loan Fund (OBDF)
 - Oregon Royalty Fund (ORF)
 - Business Oregon Relender Program
- Loan Insurance
 - Credit Enhancement Fund (CEF)



Salem Municipal Airport



Truck Route to I5
1.5m/2.4km

LANCASTER BLVD SE

KUEBLER BLVD SE

AUMSVILLE HWY SE

TURNER ROAD

DEER PARK DR SE

FLAT + SHOVEL READY

JURISDICTION: CITY OF SALEM

SIZE: CONFIG. 2 TO 100 ACRES

